



GEARHEADS Frame size 90mm sq. (3.54 in. sq.)

METAL TYPE & BALL BEARING TYPE

▶ **RATED TORQUE OF GEARHEAD**

MODEL	Speed(rpm)		500	300	200	120	100	60	50	30	20	15	10	6	5	3	2	1		
	Ratio	Speed	50Hz	3	5	7.5	12.5	15	25	30	50	75	100	150	250	300	500	750	1500	
			60Hz	3.6	6	9	15	18	30	36	60	90	120	180	300	360	600	900	1800	
L9HK□M L9HK□B L9G10D(DECIMAL)	High	kg-cm	6.6	10.9	16.4	27.3	32.8	49.3	59.1	89.1	100	100	100	100	100	100	100	100	100	
	Low		1.9	3.2	4.9	8.1	9.7	14.6	17.5	26.4	39.6	52.8	79.2	100	100	100	100	100	100	
	High	N-m	0.64	1.07	1.61	2.68	3.21	4.83	5.79	8.73	9.80	9.80	9.80	9.80	9.80	9.80	9.80	9.80	9.80	9.80
	Low		0.19	0.32	0.48	0.79	0.95	1.43	1.72	2.59	3.88	5.17	7.76	9.80	9.80	9.80	9.80	9.80	9.80	
	High	oz-in	91	152	228	380	456	684	821	1237	1389	1389	1389	1389	1389	1389	1389	1389	1389	1389
	Low		27	45	67	112	135	203	243	367	550	733	1100	1389	1389	1389	1389	1389	1389	

- * The normal torque is that the motor and gearhead are directly coupled.
- * Insert the denominator of reduction ratio in □ of gearhead model name.
- * Actual rotation speed is 2-15% less than synchronous speed.
- * ■Color indicates that the rotation of gearhead shaft is in opposite direction as output shaft of motor.

With Decimal Gearhead

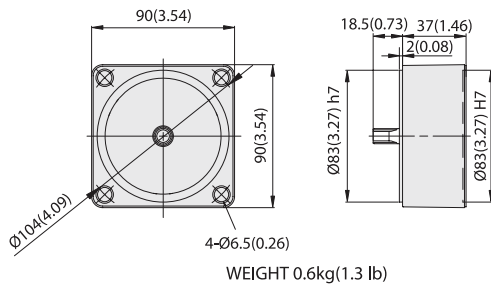
SPEED CONTROL
INDUCTION MOTORS

DIMENSIONS

Unit : mm(inch)

DECIMAL GEARHEAD

L9G10D

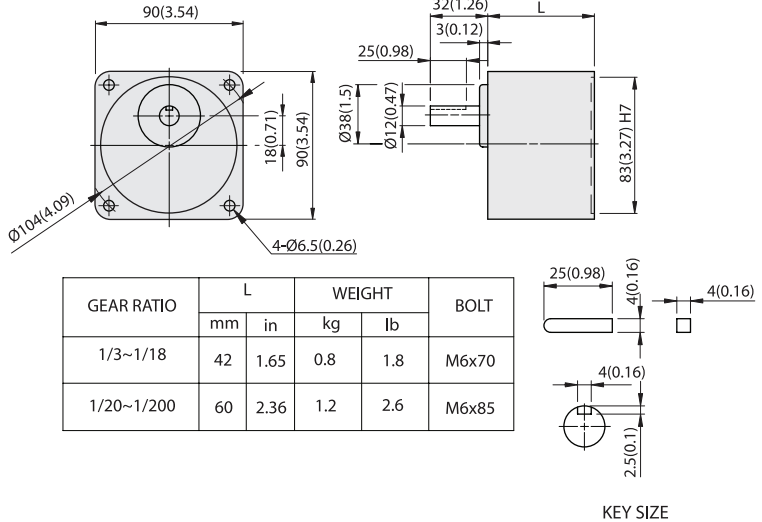


WEIGHT 0.6kg(1.3 lb)



GEARHEAD

L9HK□ M(B)



L9HK□ M(B) + L9I40P□ LT

